



## Exo Case V0

W

what9000

[VIEW IN BROWSER](#)

updated 24. 11. 2022 | published 24. 11. 2022

## Summary

This is a rough draft of a SFFPC that stands vertically and uses a full size ATX PSU.

[Gadgets](#) > [Computers](#)

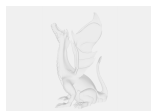
Tags: [gpu](#) [computercase](#) [sffpc](#)

This is a quick upload of a case that I am working on. I am pretty confident the PSU side foot needs some dremeling to get the low profile psu plug in, I'll work on that in a bit.

Required:

M3 socket head bolts, M3 heat set inserts, M3 washers, M3 recessed head bolts (m2.5?), GPU riser cable, 90 degree PSU power connector,

## Model files



**exo-case-psu-side-foot.3mf**



**exo-case-center-base.3mf**

---



**exo-case-center\_base\_brace.3mf**

---



**exo-case-center-base-brace-top.3mf**

---



**exo-case-psu-bracket.3mf**

---



**exo-case-psu-side-plate.3mf**

---



**exo-case-gpu-side-plate.3mf**

---



**exo-case-top.3mf**

---



**exo-case-gpu-side-foot.3mf**

---



**exo-case-frame-brace-rear.3mf**

---



**exo-case-gpu-riser-brace-x2.3mf**

---



**exo-case-gpu-bracket.3mf**

---



**exo-case-frame\_brace\_front.3mf**

---



exo-case-motherboard\_standoff-x4.3mf

## License ©

This work is licensed under a  
[Creative Commons \(4.0 International License\)](#)



### Attribution

---

- ✗ | Sharing without ATTRIBUTION
- ✓ | Remix Culture allowed
- ✓ | Commercial Use
- ✓ | Free Cultural Works
- ✓ | Meets Open Definition