



Shelly Button 1 Wall Holder

 **knackwurst**

[VIEW IN BROWSER](#)

updated 24. 11. 2022 | published 24. 11. 2022

Summary

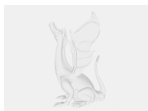
This is a Wall Holder for the Shelly Button 1.

[Household](#) > [Other House Equipment](#)

Tags: [shelly](#) [shellybutton1](#)

It adheres to the wall using double sided tape and allows for easy access.

Model files



shellybutton1.3mf

License

This work is licensed under a
[Creative Commons \(4.0 International License\)](#)



Attribution-NonCommercial

- ✗ | Sharing without ATTRIBUTION
- ✓ | Remix Culture allowed
- ✗ | Commercial Use
- ✗ | Free Cultural Works
- ✗ | Meets Open Definition