



Japanese Style Fire Lamp



Beeks1996

[VIEW IN BROWSER](#)

updated 24. 11. 2022 | published 24. 11. 2022

Summary

Add a fire bulb or led candle and relax!

[Household](#) > [Living Room](#)

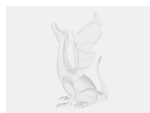
Tags: [light](#) [lamp](#) [lampshade](#) [japanese](#) [ledlamp](#) [relax](#)
[japaneseculture](#) [dojo](#)



Originally I bought a cheap wax melter, one day the glass tray broke and I was left with this Japanese lantern style fixture. I ended up making a roof for it so I could add a LED flame bulb to it. I took the flame bulb apart and wired it directly to a cord.

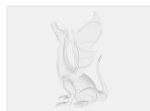
As I know most people won't have the base but still want one of these, I went into F360 and made a design of the wooden base so it can be fully 3d printed. To make a diffusion layer to soften the light you can use legal sized printer paper, colored tissue paper, thin flexible plastic or tape standard paper together.

Model files



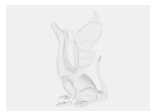
brim.3mf

📄 1 of these



bottom.3mf

📄 has 0.75inch hole for a cord



shortside.3mf

📄 2x of these



fullprint.3mf

☐ All the pieces in one file.



longside.3mf

☐ 2x of these



roof.3mf

☐ 1 of these.

License

This work is licensed under a
Creative Commons (4.0 International License)



Attribution

- ✗ | Sharing without ATTRIBUTION
- ✓ | Remix Culture allowed
- ✓ | Commercial Use
- ✓ | Free Cultural Works
- ✓ | Meets Open Definition