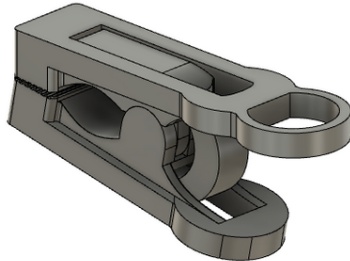


Towel Clip



Snity

[VIEW IN BROWSER](#)

updated 24. 11. 2022 | published 24. 11. 2022

Summary

Modified clothes peg for holding towels.



0.90 hrs



2 pcs



0.20 mm



0.40 mm



PET
PC



6 g



Creality
Ender 3

[Household](#) > [Bathroom](#)

Tags: [holder](#) [towel](#) [clip](#) [pin](#) [peg](#) [towelholder](#) [towels](#)
[towelhook](#)

Modified clothes peg for holding towels

I use PETG for Top and Bottom part and PC for String.

Compatible with

<https://www.printables.com/cs/model/324334-towel-hook>

This remix is based on



Clothes peg

by Snity

Model files



top.stl



bottom.stl



string.stl

Print files



towel_clip.gcode

🌀 PET 🌀 0.40 mm ≡ 0.20 mm ⌚ 0.72 hrs ⚖️ 5 g



towel_clip_string.gcode

🌀 PC 🌀 0.40 mm ≡ 0.20 mm ⌚ 0.18 hrs ⚖️ 1 g

License

This work is licensed under a
[Creative Commons \(4.0 International License\)](https://creativecommons.org/licenses/by-sa/4.0/)



Attribution-ShareAlike

- ✗ | Sharing without ATTRIBUTION
- ✓ | Remix Culture allowed
- ✓ | Commercial Use
- ✓ | Free Cultural Works
- ✓ | Meets Open Definition