

Arduino Rover



Jose Miranda

[VIEW IN BROWSER](#)

updated 12. 4. 2022 | published 16. 6. 2020

Summary

This is a simple Arduino rover chassis.

[Hobby & Makers](#) > [RC & Robotics](#)

Tags: [sensor](#) [arduino](#) [finder](#) [distance](#) [rover](#) [ultrasonic](#)
[sunfounder](#) [range](#) [servos](#)

This is a simple Arduino rover chassis. It can hold two horizontal servos for wheels, one vertical servo for a sensor, and a 8xAA battery pack. The zip file includes all the parts in the photo for reference in Autodesk Inventor format. A sensor adapter for the SunFounder Ultrasonic Distance Sensor (Amazon) is included.

I also included the Arduino files I am using for this rover, just in case anybody needs it.

Print instructions

Unassociated tags: caster wheel

Category: Robotics Summary

This is a simple Arduino rover chassis. It can hold two horizontal servos for wheels, one vertical servo for a sensor, and a 8xAA battery pack. The zip

file includes all the parts in the photo for reference in Autodesk Inventor format. A sensor adapter for the SunFounder Ultrasonic Distance Sensor (Amazon) is included.

I also included the Arduino files I am using for this rover, just in case anybody needs it.

Print Settings

Printer Brand: Prusa

Printer: Prusa Steel

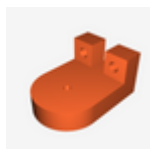
Rafts: No

Supports: No

Resolution: 0.15

Infill: 15%

Model files



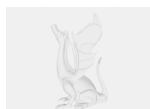
sensor_base.stl



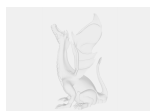
clamp.stl



base_robot_3d_print.stl



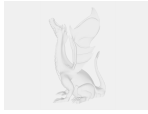
pcb_final_default.ipt



stackable-female-pin-header_6-way.ipt



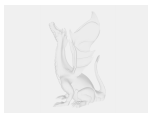
stackable-female-pin-header_default.ipt



power.ipt



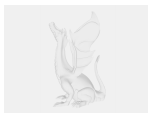
user-library-dc-range-dc-connector4840_2201_defau.ipt



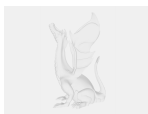
pcb_final_default.ipt



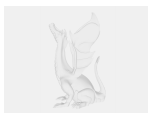
ic-dip-28_default.ipt



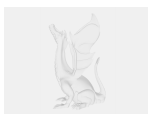
user-library-soic-8_soic-8_pins_1_default.ipt



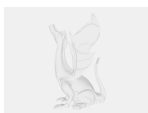
user-library-alu-d8_fuss_1_default.ipt



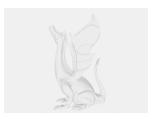
user-library-alu-d8_pins_1_default.ipt



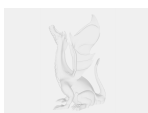
user-library-qfn32-ftdi_anschl_x_fcsse_1_default.ipt



user-library-qfn32-ftdi_k_x_f6rper_1_default.ipt



header-vertical-254mm-pitch2_header-6-way.ipt



user-library-alu-d8_beschriftung_1_default.ipt



user-library-soic-8_soic-8_body_1_default.ipt



user-library-alu-d8_k_x_f6rper_1_default.ipt



user-library-qfn32-ftdi_beschriftung_1_default.ipt



stackable-female-pin-header_6-way.ipt



stackable-female-pin-header_default.ipt



user-library-67068-0000-molex_default.ipt



led-1206_default.ipt



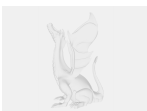
xtal-small_default.ipt



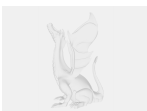
so-369a_standard.ipt



servo-360.ipt



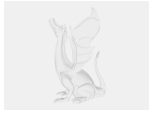
sensor_base.ipt



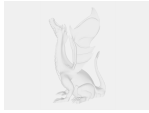
sunfounder_sf-sr02.ipt



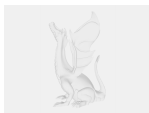
battery_holder_8_aa.ipt



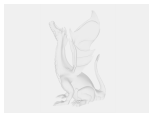
aa-l91-battery.ipt



wheel.ipt



clamp.ipt



caster-wheel.ipt



base_robot_3d_print.ipt

[Find source .stl files on Thingiverse.com](#)

License

This work is licensed under a
Creative Commons (4.0 International License)



Attribution—Noncommercial—Share Alike

- ✗ | Sharing without ATTRIBUTION
- ✓ | Remix Culture allowed
- ✗ | Commercial Use
- ✗ | Free Cultural Works
- ✗ | Meets Open Definition