



Bannister Baby Gate Attachment



Jake Engevold

[VIEW IN BROWSER](#)

updated 27. 4. 2023 | published 27. 4. 2023

Summary

A quick design I came up with in order to secure my baby gate to the bannister at the bottom of my stairs.

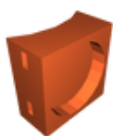
[Household](#) > [Living Room](#)

This was designed around my specific bannister and baby gate and may not work for your specific use case. I also used a thin piece of double sided tape between the part and the bannister to make it extra secure.

For reference, because the bannister is angled, I would suggest printing it with the thicker edge on top and then inverting it when installed.

No supports needed as long as it is printed up right with a well calibrated printer.

Model files



bannister-baby-gate-attachement.stl

License

This work is licensed under a
Creative Commons (4.0 International License)



Attribution-NonCommercial

- ✗ | Sharing without ATTRIBUTION
- ✓ | Remix Culture allowed
- ✗ | Commercial Use
- ✗ | Free Cultural Works
- ✗ | Meets Open Definition