



# KCD1-104 Dual Switch Enclosure



ChrisUFO

[VIEW IN BROWSER](#)

updated 6. 4. 2023 | published 6. 4. 2023

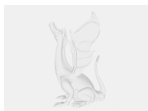
## Summary

I needed an enclosure for two of these KCD1-104 switches that I could mount. Super simple design that snaps together.

[Hobby & Makers](#) > [Electronics](#)

Tags: [enclosure](#) [microswitch](#) [powerswitch](#) [kcd1](#)

## Model files



**dual-kcd01-switch-box.step**

**dual-kcd01-switch-box.stl**

# License

This work is licensed under a  
**Creative Commons (4.0 International License)**



**Attribution-ShareAlike**

---

- ✗ | Sharing without ATTRIBUTION
- ✓ | Remix Culture allowed
- ✓ | Commercial Use
- ✓ | Free Cultural Works
- ✓ | Meets Open Definition