

High-Detail Marker Rock Terrain Element



Books

[VIEW IN BROWSER](#)

updated 7. 4. 2023 | published 7. 4. 2023

Summary

Model of a marker rock created using photogrammetry.



2.55 hrs



2 pcs



0.20 mm



0.40 mm
0.60 mm



PLA



24 g



Prusa
MK3/S/S+

[Tabletop Miniatures](#) > [Props & Terrains](#)

Tags: [photogrammetry](#) [landscape](#) [terrain](#) [stone](#) [rock](#)
[aquarium](#) [scatterterrain](#) [objectivemarker](#) [highpoly](#)

Model of a marker rock created using photogrammetry.

Model files

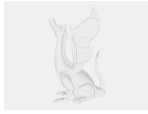
rock-03-final-netfabb.stl

☐ Mesh trimmed down using PrusaSlicer



rock-01-cleaner.blend

Blender 3.1.2



rock-02-cleanest-non-manifold-extrude.blend

Blender 3.1.2

Print files

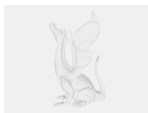
rock-extrude_02mm_pla_mk3s_2h33m.gcode

PLA 0.40 mm 0.20 mm 2.55 hrs 24 g Prusa MK3/S/S+

rock-extrude_06n_02mm_pla_mk3s_1h42m.gcode

PLA 0.60 mm 0.20 mm 1.69 hrs 27 g Prusa MK3/S/S+

Other files



texturedmesh_obj.zip

Raw textured mesh from the Meshroom pipeline

License

This work is licensed under a
[Creative Commons \(International License\)](#)



Public Domain

- ✓ | Sharing without ATTRIBUTION
- ✓ | Remix Culture allowed
- ✓ | Commercial Use
- ✓ | Free Cultural Works
- ✓ | Meets Open Definition

