



# Magnetic Split handle

B

Bwolfey

VIEW IN BROWSER

updated 6. 4. 2023 | published 6. 4. 2023

## Summary

A handle meant to surface-mount to two surfaces that come together in a tight joint.

[Hobby & Makers](#) > [Mechanical Parts](#)

Tags: [box](#) [handle](#) [grip](#) [hardware](#) [magnetic](#) [catch](#)  
[surfacemount](#) [surfacemountbucket](#) [splithandle](#)

These handles were designed for ease of installation, lay-flat form factor, and magnetic coupling. Two wood screws (or machine screws) on each end of the pivot points prevent axis misalignment. The pivots are comprised of a 1" no 6. machine screw and a corresponding #6 nylock nut.

Depending on your application, an additional latch may be necessary to keep the two surfaces tight together.

BOM:

QTY 4 - 1" machine screw: <https://www.mcmaster.com/91772A153/>

QTY 4 - #6 nylock nut: <https://www.mcmaster.com/90631A007/>

QTY 8 - #6 pan-head wood screw or machine screw length sized to fit your application

QTY 2 - **pivot piece 1**, **pivot piece 2**, and **handle half**

QTY 6 - DIA 8mm x 3mm magnets.

# Model files

## handle-half.3mf

📄 QTY 2

---

## pivot-piece-1.3mf

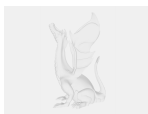
📄 QTY 2

---

## pivot-piece-2.3mf

📄 QTY 2

---



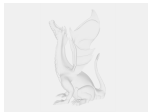
## mirrored-pivot-piece.step

---



## pivot-piece.step

---



## handle-right-half.step

---



## full-handle-assembly.step

# License

This work is licensed under a  
[Creative Commons \(4.0 International License\)](https://creativecommons.org/licenses/by-nc-sa/4.0/)



**Attribution—Noncommercial—Share Alike**

---

- ✗ | Sharing without ATTRIBUTION
- ✓ | Remix Culture allowed
- ✗ | Commercial Use
- ✗ | Free Cultural Works
- ✗ | Meets Open Definition

