



## Tern GSD Clubhouse mounted bubble fan



maxelman

VIEW IN BROWSER

updated 12. 1. 2024 | published 12. 1. 2024

## Summary

Blow some bubbles from your cargo bike!

[Toys & Games](#) > [Outdoor Toys](#)

Tags: [bike](#) [cargobike](#) [gsd](#)

Printed in PLA+. For the fan I printed it on its face using Support W as an interface material. You'll need two bolts and some washers and nuts to assemble this version.

Here's a video: <https://vimeo.com/860332009/291d8b5e1e?share=copy>

**Version 2 - Published 4/27/23:** taller sides with a lip to keep the bubble solution inside. Improved the fan mounting for a pass-through on both sides.

**Version 3 ideas:** Use a 408 ball bearing printed into the fan, add a larger trapezoid shaped reservoir, add water bottle threads to use with the reservoir.

# This remix is based on



**bike wind bubbler 4.2**

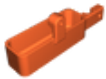
by dav88

## Model files

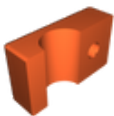


**Previous Versions**

1 file



**side-box-v1.stl**



**side-clamp-v1.stl**



**bike-bubble-box-v2.stl**



**fan-v1.stl**

## License

This work is licensed under a  
[Creative Commons \(4.0 International License\)](https://creativecommons.org/licenses/by/4.0/)



## Attribution

---

- ✗ | Sharing without ATTRIBUTION
- ✓ | Remix Culture allowed
- ✓ | Commercial Use
- ✓ | Free Cultural Works
- ✓ | Meets Open Definition