



Mass MTG Tokens - Custom Token Counters for Magic the Gathering

 TheMakerSphere

[VIEW IN BROWSER](#)

updated 29. 2. 2024 | published 29. 2. 2024

Summary

This is my take on how to handle a lot of tokens. Dual sets of numbers to track total tokens & tapped/attacking/etc.

[Toys & Games](#) > [Other Toys & Games](#)

Tags: [3dprinting](#) [mtg](#) [tokens](#) [magicthegathering](#) [token](#)
[mtgcounters](#) [mtgtokens](#) [mtgedh](#) [mtgaccessories](#)
[mtgcounter](#)

This is my take on how to handle a lot of tokens. There are two sets of numbers that can range from 0-99. One on top and one on bottom. The bottom number can represent the total amount of tokens you have. While the top number can represent how many are tapped, attacking, summoning sick, etc. You can print your own labels using custom artwork to create a truly unique, homemade mass token that expresses your style. Download a label template, a printable number wheels sheet and see full step-by-step build instructions at [Mass MTG Tokens](#).

- Print 1 top shell or 1 V2 top shell thin
- Print 1 base shell

- Print 4 wheels
 - If your printer is perfectly tuned, the 2.2mm wheels should work well
 - I included a few .3mf files for printing dual color wheels
 - I also included the numbers separately
- *Print 1 box - holds 8 Mass MTG Tokens in it

*The V2 top shell is much thinner than the original, which makes less shadows on the numbers. It is the exact same build process as with the original top shell. Just be aware that by using the V2 top shell, the token will no longer fit inside the box as it will not be thick enough.

No supports or brims or rafts

15% infill

Black/White PLA

I printed at a 0.28 layer height. I figured most of the wheels are covered and the entire top shell is basically covered with the label and I really didn't need that much detail. Print at whatever quality you want.

I also created a remix that features a dry erase/whiteboard version of this. Check out [MTG Dry Erase Tokens w/Counters](#)

Artwork Credits:

[Scute Swarm](#) Token - Alex Konstad

[Elemental](#) Token - Mark Winters

[Soldier](#) Token - Magali Villeneuve

[Soldier #2](#) Token - Magali Villeneuve

[Phyrexian Mite](#) Token - Dave Kendall

[Sliver](#) Token - Carl Critchlow

Mass MTG Tokens are unofficial Fan Content permitted under the Fan Content Policy. Not approved/endorsed by Wizards. Portions of the materials used are property of Wizards of the Coast. ©Wizards of the Coast LLC

This remix is based on

Physical
Objects
Thingiverse
- Digital
Designs
for
Physical
Objects

- Digital
Designs
for
Physical
Objects
Thingiverse - Digital Designs for Physical Objects

Model files



Numbers for Wheels

4 files



wheel-numbers-top-right.stl



wheel-numbers-bottom-left.stl



wheel-numbers-top-left.stl



wheel-numbers-bottom-right.stl



v2-shell-top-thin.stl



shell-top.stl



shell-base.stl



wheel-220mm.stl



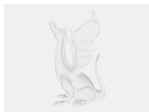
wheel-230mm.stl



wheel-225mm.stl



petg-dual-color-wheels-22mm.3mf



pla-dual-color-wheels-22mm.3mf



mass-token-box.stl

License ©

This work is licensed under a
[Creative Commons \(4.0 International License\)](#)



Attribution—Noncommercial—Share Alike

- ✗ | Sharing without ATTRIBUTION
- ✓ | Remix Culture allowed
- ✗ | Commercial Use

- ✖ | Free Cultural Works
- ✖ | Meets Open Definition