



## BambuLab X1C IKEA FÖRNUFTIG air purifier adapter



LitoWelt

[VIEW IN BROWSER](#)

updated 17. 4. 2023 | published 17. 4. 2023

## Summary

BambuLab X1C IKEA FÖRNUFTIG air purifier adapter

[3D Printers](#) > [3D Printers - Upgrades](#)

Tags: [ikea](#) [diy](#) [air](#) [purifier](#) [airpurifier](#) [bambu](#)  
[bambulab](#) [bambux1carbon](#) [foernuftig](#)

BambuLab X1C Adapter to mount a IKEA FÖRNUFTIG air purifier instead of the glass on top of the printer.

FÖRNUFTIG (German): <https://www.ikea.com/de/de/p/foernuftig-luftreiniger-zusaetzlicher-gasfilter-weiss-s29444214/>

### Why should you do that? Good question!

1. The FÖRNUFTIG is MUCH quieter then the original bambu camber fan
2. The FÖRNUFTIG is MUCH more powerfull then the original chamber fan of the bambu.
3. The additional gas filter for the FÖRNUFTIG is MUCH bigger and usefuller then the little one that is mounted inside of the bambu
4. The AMS still find its place on top of the printer. - Fits perfectly on top of the FÖRNUFTIG ;-).

5. And its cheap. 79,99€ including the gas filter here in Germany (06.04.2023) :D
6. With the gas filter installed, you can smell nearly no fumes while printing for example petg.

## Chamber temps

Here a little example. To be clear, my Bambu printer is a little bit modified. It is isolated with Alubutyl inside of the whole chamber.. So my chamber temps in general are a little bit higher then normal. When i print petg with a 70% chamber fan and closed top glass, i will get a clogged nozzle after around 5-6h... So in all examples without the FÖRNUFTIG mod, the upper glass is always a little bit open with a ~ 2cm spacer.

1. PLA - 2,5h - Cool Plate @ 40°C - Nozzle @ 220°C - Chamber FAN @ 70% - Ambient Temp @ 17°C - Chamber Temp = **29°C**
2. PLA - 2,5h - Cool Plate @ 40°C - Nozzle @ 220°C - FÖRNUFTIG Fan @ 2/3 - Ambient Temp @ 17°C - Chamber Temp = **24°C**
3. PETG - 4,5h - Textured Plate @ 80°C - Nozzle @ 240°C - Chamber FAN @ 70% - Ambient Temp @ 17°C - Chamber Temp = **39°C**
4. PETG - 4,5h - Textured Plate @ 80°C - Nozzle @ 240°C - FÖRNUFTIG @ 2/3 - Ambient Temp @ 17°C - Chamber Temp = **29°C**

I dont have sound files about the noise level yet. But the next time you are in a ikea you can test it yourself. Most of the time they have the FÖRNUFTIG inside of their stores. It is MUCH quieter then the original bambu chamber fan. ;-)

## Adapter

You can download the step files, modifie them etc.. In my case they worked fine like they are, without glueing them together or something else. There is also enough space to install a led stripe.

I printed them for test purpose in PLA Galaxy Silver from prusa and this works still fine. But in the final version i would recomend petg because of the much more temp stability.

- PETG
- 0.28mm layer high
- 10% infill
- 0.4mm Nozzle (0.6 would be much faster and better)
- Print time: IDK, some hour on the Bambu X1C

## Licence

The only thing you are not allowed to do with this adapter is to sell them. You can download it, modyfie it to fit you personal purpose and also upload

it (or use it in your print farm). But in any case please link my original model ;-)

Ps: I'm sorry for my bad english :D <3

You want to support me? <https://www.buymeacoffee.com/LitoW>

## Model files



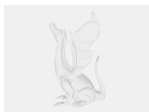
**fornuftigbambubackright.step**



**fornuftigbambufrontright.step**



**fornuftigbambubackleft.step**



**fornuftigbambufrontleft.step**



**fornuftig-bambu-adapter.f3d**

## License ©

This work is licensed under a  
[Creative Commons \(4.0 International License\)](https://creativecommons.org/licenses/by-nc/4.0/)



**Attribution-NonCommercial**

- ✗ | Sharing without ATTRIBUTION
- ✓ | Remix Culture allowed
- ✗ | Commercial Use
- ✗ | Free Cultural Works

✖ | Meets Open Definition