



Insert Meeple War

T Tomáš Nový

[VIEW IN BROWSER](#)

updated 12. 10. 2023 | published 12. 10. 2023

Summary

Fully functional insert for the board game Meeple War. This is a release of the game by CMON (square box).

[Toys & Games](#) > [Board Games](#)

Tags: [insert](#) [boardgameinsert](#) [boardgameorganizer](#) [meeplewar](#)
[meeplewarinsert](#)

This insert is for everyone who has struggled with the fact that there is no proper insert for the CMON version of board game Meeple War. During the month of June (2022), I worked on an insert for the game Meeple War. I looked at 2 inserts on the internet, but unfortunately they were not for the CMON box. So I decided to make a proper and nice looking insert, which would be useful for the game.

The total printed time was around 28 hours. The total material consumed 550 grams. I tried to keep consumption and time as small as possible. I put a lot of emphasis on keeping the components in the binders. Therefore, they are as close as possible to the lid of the box.

The insert consists of a total of 8 parts, of which there are a total of 5 models. One of the models is printed four times (player components). I am also attaching 4 more experimental models (middle section) where I tried to reduce material consumption. I didn't try to print, but you can write how you managed to print it.

I printed the parts on a Prusa MK2 printer, as material I used PLA light green (Gembird), white (Gembird) and red (C-Tech), nozzle 0.4 and layer height 0.2, 20% infill (you can print with 15% infill). In short, I used the basic settings. I tried 15% fill on a large part (middle components) and there was a problem with the bridges sagging with that little infill so I switched to 20%.

If you have any questions, feel free to ask.

Model files



Meeple War insert basic

5 files



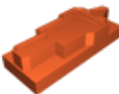
1_meeple_war_insert_player_components.stl



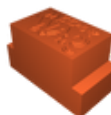
2_meeple_war_insert_map_tiles.stl



3_meeple_war_insert_setup_map_tiles.stl



4_meeple_war_insert_middle_components.stl

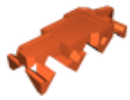


5_meeple_war_insert_middle_logo.stl

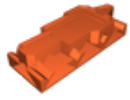


Meeple War insert experimental parts middle section

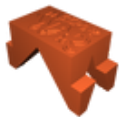
4 files



meeple_war_insert_middle_components_experimental.stl



meeple_war_insert_middle_components_experimental_wi... .stl



meeple_war_insert_middle_logo_experimental.stl

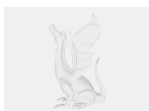


meeple_war_insert_middle_logo_experimental_with_bot... .stl

Other files



meeple_war_insert_basic.zip



meeple_war_experimental.zip



meeple_war_all.zip

License ©

This work is licensed under a
[Creative Commons \(4.0 International License\)](https://creativecommons.org/licenses/by-nc-sa/4.0/)



Attribution—Noncommercial—Share Alike

- ✗ | Sharing without ATTRIBUTION
- ✓ | Remix Culture allowed
- ✗ | Commercial Use
- ✗ | Free Cultural Works
- ✗ | Meets Open Definition