



Vixen adaptor for 20x20mm extrusion



Tnever

[VIEW IN BROWSER](#)

updated 6. 4. 2023 | published 6. 4. 2023

Summary

Attaches a piece of 20x20mm extrusion to a vixen mount, used for a guidescope such as the OpenAstroTech OAG.

[Learning](#) > [Physics & Astronomy](#)

Tags: [vixen](#) [openastroguider](#) [openastrotech](#) [vixendovetail](#)

Attaches a piece of 20x20mm extrusion to a vixen mount, used for a guidescope such as the OpenAstroTech OpenAstroGuider (OAG). The Vixen adaptor that is part of the standard OpenAstroTech Guider did not work with the stock vixen mount attached to my Celestron scope because it blocked the dovetail slot on both ends and my mount doesn't open to drop in from above.

The dovetail mount on my scope is a relatively cheap design where instead of working like a more conventional design where the whole side of the dovetail mount opens and closes to clamp, this dovetail mount only has a thumbscrew that is used to lock it in place and the slot is fixed width (see pic).

Requires two 12mm M4 cap head screws and T nuts. M5 screws and T nuts would probably fit too.

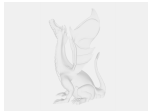
f360 and step file included in case anyone needs to modify it.

Model files

vixenblock.stl



vixenblock-v2.step



vixenblock-v2.f3d

License ©

This work is licensed under a
[Creative Commons \(4.0 International License\)](#)



Attribution-ShareAlike

-
- ✗ | Sharing without ATTRIBUTION
 - ✓ | Remix Culture allowed
 - ✓ | Commercial Use
 - ✓ | Free Cultural Works
 - ✓ | Meets Open Definition