



Lamp with Threaded Base



César Pazzi

[VIEW IN BROWSER](#)

updated 6. 4. 2023 | published 6. 4. 2023

Summary

This is a model to make desk lamps that can be interchangeable between the top part and the base.

[Household](#) > [Home Decor](#)

Tags: [light](#) [lamp](#) [desk](#) [decor](#) [home](#) [desk lamp](#)

Design to be interchangeable between the top part which is the pretty part and the base which is a basic cylinder with a thread.

I included .3mf files to slice in PrusaSlicer (open as project) and .f3d for Fusion 360 to edit and adapt as you like.

INSTRUCTIONS TO PRINT:

- **Base with Thread.3mf**

Open in PrusaSlicer as project and you are ready to print in PLA.

- **Lamp.3mf**


Open in PrusaSlicer as project and you are ready to print in PLA or choose your filament options before printing. Configs for "Lamp" are already preconfigured ("Top" part: 0 layers for top and bottom, 0% infill, 2-3 Perimeters (can be 1 to save filament but will be less fragile)). **This file is not meant to be printed in Vase Mode.**

Model files

base-with-thread.3mf

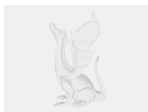
 Open as Project and Print

lamp.3mf

 Open as Project and see instructions



threaded-base-for-lamp.f3d



spiral-lamp.f3d

License

This work is licensed under a
[Creative Commons \(4.0 International License\)](#)



Attribution

- ✗ | Sharing without ATTRIBUTION
- ✓ | Remix Culture allowed
- ✓ | Commercial Use
- ✓ | Free Cultural Works
- ✓ | Meets Open Definition