



## Voron Switchwire BTT TFT35 SPI V2.1 Housing



Ken226

[VIEW IN BROWSER](#)

updated 6. 4. 2023 | published 6. 4. 2023

### Summary

This is a heavily modified version of my Voron 2.4, TFT35 SPI Housing.

[3D Printers](#) > [3D Printers - Upgrades](#)

This is a screen case for the BTT TFT35 SPI V2.1 that BigtreeTech introduced for their CB1, Raspberry Pi alternative. The CB1 has the drivers for this display built-in.

The Screen sits a couple millimeters below the level of the housing face, which allows the bezel's accent insert to cover the electronics traces around the screen perimeter. The accent insert is printed separately and glued to the screen retainer using a few drops of super glue. The screen retainer and bezel insert both have locating features, which will help you keep everything aligned while gluing them together.

The screen retainer needs 4 M3x6mm socket head cap screws that thread into the screen retainer from the backside, to secure the screen into the housing.

The little logo insert also is glued in place with a drop of super glue.

The bezel accent insert and bezel base/screen retainer should be printed with a .1mm or thinner layer height. The housing itself looks good printed @ .2mm layer height.

I included stp files for those of you who like to remix.

## Model files

**tft35-spi-v21-housing.stl**

---

**logo.stl**

---

**bezelbase.stl**

---

**bezel-accent.stl**

---



**bezel-accent.stp**

---



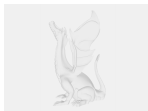
**bezelbase.stp**

---



**logo.stp**

---



**tft35-spi-v21-housing.stp**

## License ©

This work is licensed under a  
**GNU**

**General Public License v3.0**

---



- ✗ | Sharing without ATTRIBUTION
- ✓ | Remix Culture allowed

- ✓ | Commercial Use
- ✓ | Meets Open Definition
- i | Share under the same license