



## Fully customizable playing cards box



bassklampfe

[VIEW IN BROWSER](#)

updated 6. 4. 2023 | published 6. 4. 2023

## Summary

Created with OpenSCAD this is a card box, which you can customize to match your card deck size.



3.13 hrs



1 pcs



0.20 mm



0.40 mm



PLA



41 g



Prusa  
MK3/S/S+

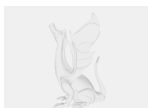
[Toys & Games](#) > [Other Toys & Games](#)

Tags: [storagebox](#) [playingcards](#)

Printed with clear PLA.

Maybe adjusting temperature and reducing printing speed will result in a better "see trough effect" but I'm happy with my first attempt.

## Model files



[playing-cards-box.scad](#)

playing-cards-box.stl

---

playing-cards-box.3mf

## Print files

playing-cards-box.gcode

🌀 PLA   📏 0.40 mm   ≡ 0.20 mm   ⌚ 3.13 hrs   ⚖️ 41 g   🖨️ Prusa MK3/S/S+

## License ©

This work is licensed under a  
[Creative Commons \(4.0 International License\)](#)



**Attribution—Noncommercial—Share Alike**

---

- ✗ | Sharing without ATTRIBUTION
- ✓ | Remix Culture allowed
- ✗ | Commercial Use
- ✗ | Free Cultural Works
- ✗ | Meets Open Definition