



Robust Pet Tag Tracker with Tile Sticker

m martian9000

[VIEW IN BROWSER](#)

updated 6. 4. 2023 | published 6. 4. 2023

Summary

A slightly more robust pet tag that attaches to your pet's collar for use in the Tile ecosystem of trackers ;-)

[Household](#) > [Pets](#)

Tags: [tile](#) [dog](#) [pet](#) [collar](#) [bluetooth](#) [sticker](#) [dogcollar](#)

A more robust print for attaching a Tile Sticker to your pet's collar. I have two young pooches who like to chew stuff so any sort of “dangly” version of attaching the tracker to their collars is a recipe for vacuuming up very tiny pieces of a Tile Sticker off of my floor ;-)

Prints easily without supports, just make sure to lay the case top face down on the build plate. I've printed this in PLA, PETG, and PC without problems. Assembly is pretty straightforward. You will need:

- 1 x Tile Sticker
- 4 x 10mm M3 screws
- 4 x M3 nuts (nylock for extra security)

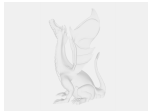
I've included the Fusion360 file if you want to modify the model. For simple sizing changes you should be able to edit the “Core Sizing”, “Collar Hole”, and “Hole Position” sketches to suit your needs. Happy printing!

Model files

tile-collar-case-bottom.stl

tile-collar-case-top.stl

tile-collar-plated.3mf



tile-sticker-pet-collar-v2.f3d

☐ Edit the “Core Sizing”, “Collar Hole”, and “Hole Position” sketches for simple sizing changes

License

This work is licensed under a
[Creative Commons \(4.0 International License\)](#)



Attribution

- ✗ | Sharing without ATTRIBUTION
- ✓ | Remix Culture allowed
- ✓ | Commercial Use
- ✓ | Free Cultural Works
- ✓ | Meets Open Definition