



Hex Base system for Gloomhaven using magnetic balls (neocubes)

A Anomard

[VIEW IN BROWSER](#)

updated 1. 7. 2023 | published 1. 7. 2023

Summary

Update v3 A lot of new designs and 4 different variants of pocket size (for magnetic balls) Big - 4,25 mm Normall - ...

[Toys & Games](#) > [Outdoor Toys](#)

Tags: [magnetic](#) [magnet](#) [thingiverse](#) [gloomhaven](#) [hex](#)

Update v3

A lot of new designs and 4 different variants of pocket size (for magnetic balls)

Big - 4,25 mm

Normall - 4,2 mm

Small - 4,15 mm

V small - 4,1 mm

Depending on your printer tolerance.

I made 4 different hexes with magnets in the middle

5,1 mm and 5,2 mm for 5 mm round magnets (with walls and without)

3,1 mm and 3,2 mm for 3 mm round magnets (with walls and without)

Update v2

Added to new Hexes

1. No walls with center magnet. You can use it as a base for all "rbross" walls and doors. You can use my tamplate for driling wholes (<https://www.thingiverse.com/thing:3831727>).
2. Hex with magnet in center. You can use this one to fit base and then put on top of it walls and all terain with magnet in center (is it super easy to drill on in any print).

Inspired by Xevin great MegHex system I wanted to make something that will be compatible with all my already printed (and painted) doors and walls from Rober R. (rbross). So I made smaller version of MegHex (31 mm vs 33 mm) which allowed me to fit all already printed terrain.

My system use 3mm magnetic balls (neocubes). Some advantages of using balls:

1. It is super easy to fit. No tools needed. Best way is to use something metal to stick ball to and then with fingers press bell to its pocket. It should snap easily. After printing more than 170 I didn't have single ball drop from its pocket or hex destroyed.
2. Balls rotate in pocket so you will never have polarity wrong way.
3. Neocubes used to be popular toy so they are much more common and you can find them on some sales as cheap as 2,99\$ for 216 balls.

You can easily make any Hex fit to this system just scale it to around 31 cm (or 30,9 cm works best for me and it depends on tolerances of your printer). Remember to adjust Z high to 100%.

For Axolote haxes you need to scale it down to 32,4 cm and then move 3 mm down (not to print lower part of hex).

This is work in progress and if anybody will be interested I will post more variations of hexes in future.

DOUBLE CHECK IF NEOCUBES ARE 3 MM NOT 5 MM !!

Print Settings

Printer Brand:

Crealitiy

Printer:

Ender 3

Rafts:

Doesn't Matter

Supports:

Doesn't Matter

Resolution:

0.2mm

Infill:

15%

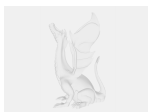
Filament: Spectrum Premium PLA Dark Gray

Notes:

I knowe many people use more then 100% flow rate on their first layer so if you have any hard time pressing magnetic balls in sockets just lower flow rate on first layer.

Custom Section ===== Category: Toy & Game Accessories

Model files



large_display_magnet_no_walls_final_444816.stl



very_small_no_wall_hex_center_32mm.stl



normall_no_wall_hex_center_51mm.stl



small_no_wall_hex_center_31mm.stl



big_hex_center_31mm.stl



small_half.stl



small_hex_center_31mm.stl



big_no_wall_hex_center_32mm.stl



big_no_wall_hex_center_52mm.stl



hex_center_32mm.stl



small_no_wall_hex_center_32mm.stl



big_no_wall_hex_center_31mm.stl



normal_hex_center_32mm.stl



big_hex.stl



normal_hex_center_51mm.stl



big_quater.stl



small_no_wall_hex_center_51mm.stl



normall_no_wall_hex_center_32mm.stl



very_small_hex_center_32mm.stl



very_small_hex.stl



small_hex_center_51mm.stl



small_hex_center_52mm.stl



normal_hex_center_52mm.stl



big_half.stl



big_hex_center_52mm.stl



very_small_no_wall_hex_center_51mm.stl



normal_hex_center_31mm.stl



very_small_no_wall_hex_center_52mm.stl



very_small_no_wall_hex_center_31mm.stl



big_no_wall_hex_center_51mm.stl



very_small_hex_center_52mm.stl



big_hex_center_32mm.stl



normal_no_wall_hex_center_52mm.stl



big_hex_center_51mm.stl



normal_quater.stl



very_small_hex_center_31mm.stl



normall_no_wall_hex_center_31mm.stl



small_hex.stl



small_hex_center_32mm.stl



very_small_hex_center_51mm.stl



normal_hex.stl



small_no_wall_hex_center_52mm.stl



very_small_quater.stl



small_quater.stl



normal_half.stl



very_small_half.stl

[Find source .stl files on Thingiverse.com](#)

License ©



This work is licensed under a
Creative Commons (4.0 International License)

Attribution

- ✗ | Sharing without ATTRIBUTION
- ✓ | Remix Culture allowed
- ✓ | Commercial Use
- ✓ | Free Cultural Works
- ✓ | Meets Open Definition