



CR-6 SE Top mount filament guide

T Teejo

[VIEW IN BROWSER](#)

updated 6. 4. 2023 | published 6. 4. 2023

Summary

I added an M6 thread to the filament guide so that you can easily attach a PC4-M6 pneumatic ptfe tube fitting to it.

[3D Printers](#) > [3D Printers - Upgrades](#)

Tags: [filamentguide](#) [ptfetubemount](#) [3dprinterparts](#)
[3dprinteraccessory](#) [3dprinterupgrade](#) [cr6se](#) [ptfecoupler](#)
[cr6semount](#)

I added an M6 thread for PC4-M6 ptfe coupler. I essentially remodelled the holes.

I printed with high detail (0.10mm - 0.4mm nozzle) as the threads are fine. The result was great. The coupler fits perfectly without damaging the part.,

Set your infill to honeycomb at 25% with no top and bottom layers.
Print Settings→Layers and Perimeters→Horizontal Shells→Solid Layers
(both top and bottom) set to 0.

This remix is based on

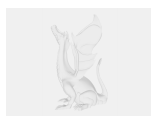


CR-6 SE top mount spool holder and bowden filament guide

by Miller_Maker

Model files

filament-guide-v4.stl



filament-guide-v4.f3d

☐ Fusion 360 model

filament-guide-v4b.3mf

License

This work is licensed under a
Creative Commons (4.0 International License)



Attribution

- ✗ | Sharing without ATTRIBUTION
- ✓ | Remix Culture allowed
- ✓ | Commercial Use
- ✓ | Free Cultural Works
- ✓ | Meets Open Definition