



PTFE Tube Roller for Drybox



Jer

[VIEW IN BROWSER](#)

updated 7. 4. 2023 | published 7. 4. 2023

Summary

Slots in where the bearings and rod would go. Requires a 10cm piece of PTFE tube for each roller.

[3D Printers](#) > [Accessories](#)

After building one of these dryboxes, I found that the bearings would rub on the inside walls of the drybox and prevent the spool from rolling smoothly. The rubbing also makes a lot of noise.

This roller replaces the rod and bearings completely and uses a 10cm section of PTFE tubing as the contact point for the rim of the spool to slide on.

Prints support-free in its default orientation.

This remix is based on



Drybox for Prusa Printer Enclosure V2 - without humidity sensor

by Ondřej Stříteský



Spool holder and drybox for Enclosure V2 - with humidity sensor

by Ondřej Stříteský



Wall-mounted drybox

by Ondřej Stříteský



Wall-mounted drybox - with sensor

by Ondřej Stříteský

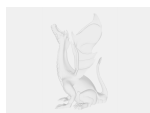


Standalone Drybox, spool holder - with humidity sensor

by Ondřej Stříteský

Model files

ptfe-roller.stl



ptfe-roller.step

License ©

This work is licensed under a
[Creative Commons \(International License\)](#)



Public Domain

-
- ✓ | Sharing without ATTRIBUTION
 - ✓ | Remix Culture allowed

- ✓ | Commercial Use
- ✓ | Free Cultural Works
- ✓ | Meets Open Definition