



## Lucifella



[VIEW IN BROWSER](#)

updated 12. 4. 2022 | published 28. 10. 2020

## Summary

Introducing: Lucifella! Most evil fella of them all, with horns to match.

[Art & Design](#) > [Sculptures](#)

Tags: [halloween](#) [fella](#) [fillamentum](#) [spookyfella2020](#)

Introducing: Lucifella!  
Most evil fella of them all, with horns to match.

My take on famous fillafella for the #SpookyFella2020 competition.

## Print instructions Category: Creatures Summary

Introducing: Lucifella!  
Most evil fella of them all, with horns to match.

My take on famous fillafella by Agustin Flowalistik for the #SpookyFella2020 competition.

## Print Settings

**Printer:** Sidewinder X1

**Rafts:** No

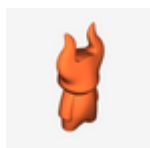
**Supports:** No

**Resolution:** 0.1

**Infill:** 15%

**Filament:** Random PLA Red

## Model files



**lucifella.stl**

[Find source .stl files on Thingiverse.com](#)

## License

This work is licensed under a  
**Creative Commons (4.0 International License)**



### **Attribution**

- 
- ✗ | Sharing without ATTRIBUTION
  - ✓ | Remix Culture allowed
  - ✓ | Commercial Use
  - ✓ | Free Cultural Works
  - ✓ | Meets Open Definition