

Quartet Puzzle (easy print no support)



Uptown Funk

[VIEW IN BROWSER](#)

updated 8. 4. 2023 | published 8. 4. 2023

Summary

A popular and joyful mechanical puzzle by Mineyuki Uyematsu. Easy print no support needed. 2 challenges in 1 print

[Toys & Games](#) > [Puzzles & Brain-teasers](#)

Tags: [parametric](#) [puzzle](#) [supportless](#) [openscad](#) [nosupport](#)
[easyprint](#) [brainteaser](#) [scad](#) [hanayama](#) [puzzlecad](#) [huzzle](#)

The goal is to assemble 4 identical pieces into one or two interconnected ring-ish cuboid as pictured. Just when you finish one, another challenge is waiting for you!

It's harder than its innocent polyomino look. Hanayama is selling a slightly advanced version of this in cast metal as “Cast Quartet”, and they rate it as a Level 6, which is the highest level.

Original model is hard to print without support. This one split each piece in 2 halves then snap together, which makes it a really easy print, no support needed.

Each .stl file represents a different size. Choose one and print 4x times. After print snap the 2 halves together. Usually you are good to go. In case

of too loose or too tight, you could use a little help of glue or hammer, accordingly.

Happy printing & puzzling!

This remix is based on

Cube
Puzzle -
Brain
Teaser

Cube Puzzle - Brain Teaser

by Creative MinerX



Hanayama Cube Puzzle

by DocBiber

Model files



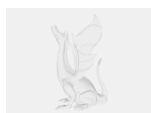
choose a size then print it 4 times

3 files

tiny.stl

large.stl

original-size.stl



quartet.scad

License

This work is licensed under a
Creative Commons (4.0 International License)



Attribution-NonCommercial

- ✗ | Sharing without ATTRIBUTION
- ✓ | Remix Culture allowed
- ✗ | Commercial Use
- ✗ | Free Cultural Works
- ✗ | Meets Open Definition