

Adafruit RGB Matrix Portal Wall Mount

 **smtibor**

[VIEW IN BROWSER](#)

updated 28. 10. 2020 | published 28. 10. 2020

Summary

Wall mounts for the Adafruit RGB Matrix Portal Series.

[Hobby & Makers](#) > [Electronics](#)

Tags: [wallmount](#) [bracket](#) [rgb](#) [adafruit](#) [mountingbracket](#) [matrixportal](#)

Wall mounts for the Adafruit RGB Matrix Portal Series.

4mm (tested)
5mm (tested)
6mm (untested)

Print instructions

Print with wall side down, 0.2mm layer height on Prusa MK3S with 0.4mm nozzle works well.

Model files



4mm-pitch-matrix-portal-wall-mount.stl



5mm-pitch-matrix-portal-wall-mount.stl



6mm-pitch-matrix-portal-wall-mount.stl



matrixportal-4mm-pitch-wall-mount-v10.f3d



matrixportal-5mm-pitch-wall-mount-v3.f3d



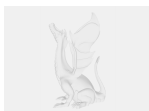
matrixportal-6mm-pitch-wall-mount-v4.f3d



matrixportal-4mm-pitch-wall-mount-v10.step



matrixportal-5mm-pitch-wall-mount-v2.step



matrixportal-6mm-pitch-wall-mount-v2.step

License

This work is licensed under a
Creative Commons (4.0 International License)



Attribution—Noncommercial—Share Alike

- ✕ | Sharing without ATTRIBUTION
- ✓ | Remix Culture allowed
- ✕ | Commercial Use
- ✕ | Free Cultural Works
- ✕ | Meets Open Definition