



DMS DP5 Hot End Holder for E3D V5 and V6



Dimitar Tanchev

[VIEW IN BROWSER](#)

updated 7. 4. 2023 | published 7. 4. 2023

Summary

Better Hot End holder for Chinese DMS DP5 printer. <https://www.aliexpress.com/item/Big-size-Autoleveling-3D-Printer-...>

[3D Printers](#) > [3D Printers - Upgrades](#)

Tags: [e3dhotend](#) [e3dv6](#) [thingiverse](#) [e3dv5](#)

Better Hot End holder for Chinese DMS DP5 printer. <https://www.aliexpress.com/item/Big-size-Autoleveling-3D-Printer-kit-10-mins-install-24V-power-supply-metal-remote-feed-extruder/32756214903.html>

Original holder allows movement of the hot end, resulting in not good prints (hot end moves up and down).

It can fit other printers as well, you have to see for yourself.

Should be able to hold V5 and V6 (both original and Chinese copies) very well.

Print Settings

Printer:

DMS DP5

Rafts:

No

Supports:

Doesn't Matter

Resolution:

3mm

Infill:

90-100%

Notes:

Using a fan is highly recommended, when using PLA

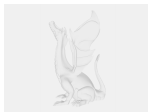
Category: 3D Printer Parts

Model files

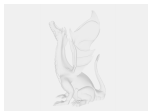
dms_dp5_hot_end_holder_for_e3d_v5_and_6_-_base.stl



dms_dp5_hot_end_holder_for_e3d_v5_and_6_-_lid.sldprt



dms_dp5_hot_end_holder_for_e3d_v5_and_6_-_base.sldprt



dms_dp5_hot_end_holder_for_e3d_v5_and_6_-_assembly.sldasm

dms_dp5_hot_end_holder_for_e3d_v5_and_6_-_lid.stl

[Find source .stl files on Thingiverse.com](#)

License ©

This work is licensed under a
Creative Commons (4.0 International License)



Attribution

- ✗ | Sharing without ATTRIBUTION
- ✓ | Remix Culture allowed
- ✓ | Commercial Use
- ✓ | Free Cultural Works
- ✓ | Meets Open Definition