



## Fellow Ode coffee grinder tool mount (Brush and Aeropress Paddle)



Sean

[VIEW IN BROWSER](#)

updated 7. 4. 2023 | published 7. 4. 2023

### Summary

This is a tool mount for the Fellow Ode coffee grinder that stores the Fellow brush and Aeropress stir stick (paddle).

[Household](#) > [Kitchen](#)

Tags: [grinder](#) [coffee](#) [aeropress](#) [burr](#) [ode](#) [fellow](#)

I use the Fellow Ode grinder every single day to make coffee. I also love the Aeropress stirring stick (paddle), but never had a good place to keep it. I needed a nice clean way to keep the Fellow brush and Aeropress stirring paddle attached to my Fellow Ode, so I designed one in FreeCAD

Note that you can definitely print the body of the mount on its side, no supports needed. I did need a brim to help adhesion on my printer. The brush mount is optional, and I just glued it with a dab of super glue.

FreeCAD files included, feel free to remix.

Happy brewing!

# Model files



## **fellow-ode-tool-mount.fcstd**

📄 FreeCAD file for the main body of the tool mount

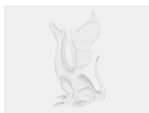
---

## **fellow-mount.stl**

---

## **brush-holder.stl**

---



## **brush-holder.fcstd**

📄 FreeCAD file for the brush holder that is glued onto the main body

# Other files



## **fellow-ode-tool-mount.zip**

# License ©



This work is licensed under a  
**Creative Commons (4.0 International License)**

## **Attribution**

---

- ✗ | Sharing without ATTRIBUTION
- ✓ | Remix Culture allowed
- ✓ | Commercial Use
- ✓ | Free Cultural Works
- ✓ | Meets Open Definition