



## Tertial gopro connector



avolkov

VIEW IN BROWSER

updated 12. 4. 2023 | published 12. 4. 2023

### Summary

Accessory gopro connector to a beam of a IKEA tertial (architect) lamp



N/A



1 pcs



0.15 mm



0.40 mm



PET



N/A



Other

[Hobby & Makers](#) > [Mechanical Parts](#)

Tags: [gopro](#) [openscad](#) [tertial](#) [ikeatertial](#)

Allows to connect various gopro things to IKEA tertial lamp.

This design uses mooncactus' gopro library

[https://github.com/MoonCactus/gopro\\_customizable\\_mounts](https://github.com/MoonCactus/gopro_customizable_mounts)

And my hardware-recess.scad library (included)

#### BOM

2x M3 16mm capscrew bolts

2x M3 nuts

1x gopro mount (M5 acorn nut, M5 20mm bolt)

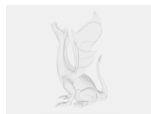
## Model files



**tertial\_mount.scad**

---

**tertial\_mount.stl**



**gopro\_mounts\_mooncactus.scad**



**hardware.scad**

## Print files

**tertial\_mount\_015mm\_petg\_1h9m.gcode**

🌀 PET 📏 0.40 mm 📏 0.15 mm ⌚ 1.00 hrs 📊 5 g

## License ©

This work is licensed under a  
**Creative Commons (4.0 International License)**



### Attribution

- 
- ✗ | Sharing without ATTRIBUTION
  - ✓ | Remix Culture allowed
  - ✓ | Commercial Use
  - ✓ | Free Cultural Works
  - ✓ | Meets Open Definition

