

# Bucks Converter Case Click Shut

M Micah

[VIEW IN BROWSER](#)

updated 7. 4. 2023 | published 7. 4. 2023

## Summary

Bucks Converter Case Step File included to make your own modifications  
Check out my other stuff...

[Hobby & Makers](#) > [Electronics](#)

Tags: [case](#) [snapfit](#) [snapon](#) [buck](#) [converter](#) [stepdown](#)  
[thingiverse](#) [close](#) [buckconverter](#) [dcdconverter](#)  
[snaptogether](#) [shuttle](#) [stepdownmodule](#) [stepdowncase](#) [shut](#)  
[lm2956](#)

## Bucks Converter Case

Step File included to make your own modifications

## Check out my other stuff

<https://www.thingiverse.com/micahjj/designs>

## Feedback and Makes

I really like getting feedback and despite having thousands of downloads I have only 1 comment and 0 makes!

It really makes a difference and feels great when you leave a comment, like, or collect things to the people who post them, so Please do that for all people as it builds community. Super important in these Covid Times. Even if you do not post things you are still part of the community (in fact you are the majority of the community), so please like, collect and comment!

Please do this for all stuff you download from everybody!

## Print Settings

### Rafts:

No

### Supports:

No

### Resolution:

200

### Infill:

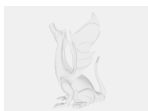
20

**Filament:** PolyMaker PLA

Category: Electronics

## Model files

**buckcasebottom.stl**



**bucksconvertercase.step**

---

**buckcasetop.stl**

[Find source .stl files on Thingiverse.com](#)

# License ©

This work is licensed under a  
**Creative Commons (4.0 International License)**



## Attribution

---

- ✗ | Sharing without ATTRIBUTION
- ✓ | Remix Culture allowed
- ✓ | Commercial Use
- ✓ | Free Cultural Works
- ✓ | Meets Open Definition