



## Wooting 60 HE Wrist Rest

 **Constantin**

[VIEW IN BROWSER](#)

updated 7. 4. 2023 | published 7. 4. 2023

### Summary

This is a wrist rest model for the Wooting 60 HE. The model accomodates the 45 deg tilt of the keyboard in the front.



7.90 hrs



1 pcs



0.30 mm



0.40 mm



PLA



154 g



Prusa  
MK3/S/S+

[Gadgets](#) > [Computers](#)

Tags: [keyboard](#) [wristrest](#) [60percent](#) [60](#) [wooting](#)

This is a wrist rest model for the Wooting 60 HE. The model accomodates the 45 deg tilt of the keyboard in the front. The model is split in the middle to fit the printspace of the mk3s.

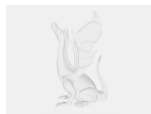
In order to print the whole model, please copy and mirror the file in prusa slicer. I printed the model standing on the edge and applied a “fuzzy skin” modifier to the surface.

The gcode is setup for the prusa mk3s with 0.4mm nozzle and “DasFilament PLA” in 0.3mm draft mode. The code contains the fuzzy surface modifier.

I had some issues with warping on the first layer. I assumed, that the surface comes out better if it is printed vertically and with the fuzzy modifier. I attached self-stick rubber feet i had left over. You may want to experiment with weights since this version without any sometimes slides around, even with rubber feet.

You may want to shrink it along its long axis by 2-3mm for perfect alignment with the stock keyboard case.

## Model files



**wrist\_rest\_v1.ipt**

---

**wrist\_rest\_v1.obj**

## Print files

**wrist\_rest\_v1\_03mm\_pla\_mk3s\_7h54m.gcode**

🌀 PLA   📏 0.40 mm   📐 0.30 mm   ⌚ 7.90 hrs   ⚖️ 154 g   🖨️ Prusa MK3/S/S+

## License ©

This work is licensed under a  
**BSD License**



- 
- ✖ | Sharing without ATTRIBUTION
  - ✓ | Remix Culture allowed
  - ✓ | Commercial Use
  - ✓ | Free Cultural Works
  - ✓ | Meets Open Definition