

"OPEN SOURCE PRUSA" Otherwise Stock Prusa Mini Y Plate Front

 **Bad_Dachshunds**

[VIEW IN BROWSER](#)

updated 29. 10. 2020 | published 29. 10. 2020

Summary

Changes the word "Original" to "Open Source" on the stock prusa mini Y plate front.



8.93 hrs



1 pcs



0.20 mm



0.40 mm



PET



100 g



Prusa MINI /
MINI+

[3D Printers](#) > [Accessories](#)

Changes the word "Original" to "Open Source" on the stock prusa mini Y plate front. This is for people who either want to show off the open source nature of the design, and/or want to build their own prusa mini with parts sourced elsewhere and don't want it to "feel" like a clone.

In every other way, this is identical to the original Prusa Mini Y Plate Front by Josef Prusa available for download as part of the original open source .stl download package. You can download that here if you need it: <https://www.prusa3d.com/prusa-i3-printable-parts/>

Design revised in Designspark Mechanical

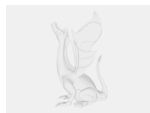
Print instructions

Print exactly as Prusa suggests. Using PETG (preferably prusament for extra authenticity feels), use 20% grid infill with a .2mm layer height. This should be a fairly easy print.

Model files



mini-y-plate-front-open_source.stl



mini-y-plate-front.rsdoc



mini-y-plate-front-open_source.3mf

Print files



mini-y-plate-front-open_source_02mm_petg_mini_8.gcode

🌀 PET 🌀 0.40 mm ≡ 0.20 mm ⌚ 8.93 hrs ⚖️ 100 g 🖨️ Prusa MINI / MINI+

License ©

This work is licensed under a
[Creative Commons \(4.0 International License\)](#)



Attribution

- ✘ | Sharing without ATTRIBUTION
- ✓ | Remix Culture allowed
- ✓ | Commercial Use
- ✓ | Free Cultural Works
- ✓ | Meets Open Definition