

Bevel Gauge - All Required Parts



kaje

[VIEW IN BROWSER](#)

updated 30. 10. 2020 | published 30. 10. 2020

Summary

This was inspired by "PL", who made a nice bevel gauge.



4.52 hrs



3 pcs



0.20 mm



0.40 mm



PLA



53 g



Prusa
MK3/S/S+

[Hobby & Makers](#) > [Tools](#)

Tags: [angle](#)

This was inspired by "PL", who made a nice bevel gauge. But it got me wondering if it were possible to make one that did not require any additional metal screws. So this is not so much a remix as a complete new design. I am very happy with the way this turned out - even better than I hoped. I am confident this will perform as well as any "store bought" bevel gauge.

Note : I made the blade a bit wider than is typical for a bevel gauge, in order to accommodate the relatively large screw diameter, as well as to give the blade extra strength.

The OnShape 3D CAD files for this are here:

<https://cad.onshape.com/documents/9f3819a34292716fdb83aba6/w/505aa74b6f211ad16c4cb42e/e/ecb92c6e074a35e9e9c004e>

Print instructions

Print in PLA using the 3mf files provided; otherwise :

Screw : Print threaded end up with supports (see photos).

- perimeters = 4
- infill 15% rectilinear
- top/bottom fill pattern = concentric
- set Z distance for detachable supports

Blade :

- infill 100%
- perimeters = 2
- top/bottom fill pattern = rectilinear

Body : Print on the side, no supports required. Note the slot is longer on one side than on the other; print with short-slot side down.

- infill 10% rectilinear
- perimeters = 3
- top/bottom fill pattern = rectilinear

To assemble insert the blade in the slot so that the angle on the blade matches the internal angle on the body slot. Insert the screw into the "thin" side of the body - tighten slightly (do not over-tighten!) to hold the blade firmly.

This remix is based on



bevel gauge / angle finder

by PL

Model files



bevelgauge-blade.3mf



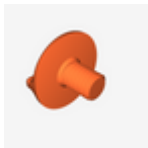
bevelgauge-body.3mf



bevelgauge-screw.3mf



bevelgauge-blade.stl



bevelgauge-screw02.stl



bevelgauge-body.stl



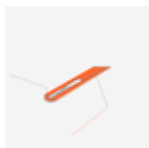
bevelgauge-screw.stl

Print files



bevelgauge-screw_02mm_pla_mk3s_30m.gcode

⚙️ PLA ⚙️ 0.40 mm ⚙️ 0.20 mm ⌚ 0.50 hrs ⚖️ 4 g 🖨️ Prusa MK3/S/S+



bevelgauge-blade_02mm_pla_mk3s_50m.gcode

🌀 PLA 📏 0.40 mm 📐 0.20 mm ⌚ 0.83 hrs ⚖️ 13 g 🖨️ Prusa MK3/S/S+



bevelgauge-body_02mm_pla_mk3s_3h12m.gcode

🌀 PLA 📏 0.40 mm 📐 0.20 mm ⌚ 3.19 hrs ⚖️ 36 g 🖨️ Prusa MK3/S/S+

[Find source .stl files on Thingiverse.com](#)

License ©

This work is licensed under a
Creative Commons (International License)



Public Domain

-
- ✓ | Sharing without ATTRIBUTION
 - ✓ | Remix Culture allowed
 - ✓ | Commercial Use
 - ✓ | Free Cultural Works
 - ✓ | Meets Open Definition