



WT32-SC01 wall mount case



Mark

[VIEW IN BROWSER](#)

updated 4. 5. 2023 | published 4. 5. 2023

Summary

Case for a WT32-SC01 ESP32 display module for wall mounting

[Hobby & Makers](#) > [Electronics](#)

Tags: [case](#) [esp32](#) [openhasp](#)

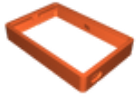
(work in progress)

Supports are necessary for the front part. Organic supports like in Prusa Slicer work fine.

In order to mount the module the display needs to be separated from the board.

The large hole in the backplate can be used to access adhesive tape pull straps.

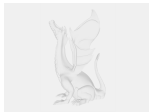
Model files



front.stl



back.stl



wt32-v16.f3d

License ©

This work is licensed under a
[Creative Commons \(4.0 International License\)](#)



Attribution

- ✗ | Sharing without ATTRIBUTION
- ✓ | Remix Culture allowed
- ✓ | Commercial Use
- ✓ | Free Cultural Works
- ✓ | Meets Open Definition