

Prusa Mini cable guide

 kspear

[VIEW IN BROWSER](#)

updated 7. 4. 2023 | published 7. 4. 2023

Summary

Prevent table cables catching as table moves

[3D Printers](#) > [3D Printers - Upgrades](#)

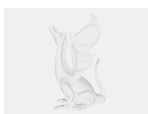
The cables connected to the back of my Mini+ heat bed would catch on the control box corner at times.

This guide bit screws into the box top cover and extends in an arc backwards to guide the cables away from catching as the table extends forward.

Provided, photo, stl and ftd (fusion360) files

Model files

cableguide-v2.stl



cableguide-v2.f3d

License ©

This work is licensed under a
Creative Commons (4.0 International License)



Attribution

- ✗ | Sharing without ATTRIBUTION
- ✓ | Remix Culture allowed
- ✓ | Commercial Use
- ✓ | Free Cultural Works
- ✓ | Meets Open Definition