

Borromini Star Christmas Tree Topper



Nathanael Scheffler

[VIEW IN BROWSER](#)

updated 27. 1. 2023 | published 27. 1. 2023

Summary

This is a Christmas Tree topper styled after some of the architectural details on Borromini's Sant'Ivo alla Sapienza...

[Art & Design](#) > [Sculptures](#)

Tags: [thingiverse](#)

EDIT 2023/01/27: Added STP files at the request of Robdanig for easier remixing!

Also, if you like the idea of adding LEDs, please check out the remix by mcurtis!

This is a Christmas Tree topper styled after some of the architectural details on Borromini's Sant'Ivo alla Sapienza church in Rome, Italy. I really appreciated the shape of it when we were learning about it, and wanted to create a 3d model, so I thought this would be a great use for it!

The design is broken into separate pieces for easy printing. There is a core and then a series of spikes. The core has pins to locate the spikes, and they are of different sizes so that things don't get mixed up.

A bit of extra tolerance is added into the model to hopefully make assembly go easier. It also adds some nice shadow lines to the assembled piece!

Please print:

1x 01 Borromini Star Core

8x 02 Borromini Star Lower Spike

8x 03 Borromini Star Middle Spike

4x 04 Borromini Star Upper Spike A

4x 05 Borromini Star Upper Spike B

1x 06 Borromini Star Top Spike

Happy printing!

Print instructions Category: Decor Summary

This is a Christmas Tree topper styled after some of the architectural details on Borromini's Sant'Ivo alla Sapienza church in Rome, Italy. I really appreciated the shape of it when we were learning about it, and wanted to create a 3d model, so I thought this would be a great use for it!

The design is broken into separate pieces for easy printing. There is a core and then a series of spikes. The core has pins to locate the spikes, and they are of different sizes so that things don't get mixed up.

A bit of extra tolerance is added into the model to hopefully make assembly go easier. It also adds some nice shadow lines to the assembled piece!

Please print:

1x 01 Borromini Star Core

8x 02 Borromini Star Lower Spike

8x 03 Borromini Star Middle Spike

4x 04 Borromini Star Upper Spike A

4x 05 Borromini Star Upper Spike B

1x 06 Borromini Star Top Spike

Happy printing!

Print Settings

Printer Brand: Anycubic

Printer: Kossel

Rafts: Doesn't Matter

Supports: Yes

Infill: 10%

Notes:

I would only use supports for the core, as it has some impossible overhangs. Everything else should be good.

This remix is based on



Borromini Star Christmas Tree Topper

by nathanaelscheffler

Model files



06_borromini_star_top_spike_1_print.stl



05_borromini_star_upper_spike_b_4_prints.stl



03_borromini_star_middle_spike_8_prints.stl



04_borromini_star_upper_spike_a_4_prints.stl



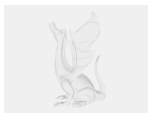
01_borromini_star_core_1_print.stl



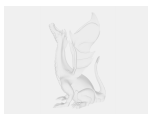
02_borromini_star_lower_spike_8_prints.stl



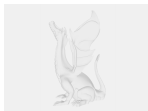
00_assembled_borromini_star_for_reference.stl



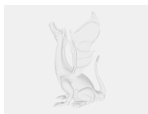
06_borromini_star_top_spike_1_print.stp



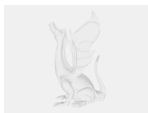
03_borromini_star_middle_spike_8_prints.stp



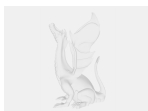
05_borromini_star_upper_spike_b_4_prints.stp



02_borromini_star_lower_spike_8_prints.stp



04_borromini_star_upper_spike_a_4_prints.stp



01_borromini_star_core_1_print.stp

License ©

This work is licensed under a
Creative Commons (4.0 International License)



Attribution

- ✗ | Sharing without ATTRIBUTION
- ✓ | Remix Culture allowed
- ✓ | Commercial Use
- ✓ | Free Cultural Works
- ✓ | Meets Open Definition