



## T80 Bike Mount 22mm (Kiddy Range Extender)



Dimension Zero

[VIEW IN BROWSER](#)

updated 28. 4. 2023 | published 28. 4. 2023

## Summary

This mount fits the Motorola T80 and similar models. It is originally designed for 22mm handle bars.

[Gadgets](#) > [Other Gadgets](#)

Tags: [mount](#) [bike](#) [ebike](#) [mountainbike](#) [motorola](#)  
[walkietalkie](#)

This mount fits the Motorola T80 and similar models. It is originally designed for 22mm handle bars and comes in 3 separate pieces so it can be printed without supports. You can mount the backpieces horizontal or vertical. Else the pieces can be replaced easily in case something breaks. I recommend printing it with a high density infill. You may also be able to print the main part in TPU.

You also need two M4 screws and hex nuts.

# Model files



## t80\_mount\_complete.stl

☐ Casing + Clips

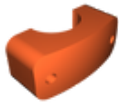
---



## t80\_casing.stl

☐ Casing only

---



## t80\_mount\_clip1.stl

☐ Clip

---



## t80\_mount\_clip2.stl

☐ Clip

---



## t80\_speak\_button\_tpu.stl

☐ Optional TPU button

---



## t80-mount\_v2.stl

# License

This work is licensed under a  
**Creative Commons (4.0 International License)**



**Attribution-ShareAlike**

---

- ✗ | Sharing without ATTRIBUTION
- ✓ | Remix Culture allowed
- ✓ | Commercial Use

- ✓ | Free Cultural Works
- ✓ | Meets Open Definition