



Snowplow for 3dsets Landy 4x4 (old)



Lukáš Foukal

[VIEW IN BROWSER](#)

updated 23. 10. 2021 | published 30. 10. 2020

Summary

Are you tired of clearing your driveway by hand? Is it too small to justify a snowblower or other full scale device?

[Hobby & Makers](#) > [RC & Robotics](#)

Tags: [rc](#) [ice](#) [car](#) [snow](#) [winter](#) [truck](#) [4x4](#) [jeep](#)
[3dsets](#) [blower](#) [plow](#) [offroad](#) [landy](#)

This model is now depreciated, please use the [new one](#).

Are you tired of clearing your driveway by hand? Is it too small to justify a snowblower or other full scale device? Well now, it can take you twice as long, using your RC.

This assembly replaces the stock "Servo guard.stl" and adds two mounting points. Into these you should insert two M3x20mm "socket head" (not the round ones with the small hex hole, the larger ones with the flat sides).

Then, to assemble the actual snowplow, you will need 10pcs M3x10mm (I had the rounded kind, but I don't think it matters) screws. With these you can screw together the two halves of the plow and attach the manifold.

The final plow is 30cm wide and in sort of the left hand drive “continent” spec since I am from the Czech Republic (as are the original designers of the car) and so that is what I am used to. If you went through the trouble to put your steering wheel on the wrong side of the Landy, I guess you could do the same here by just mirroring the parts.

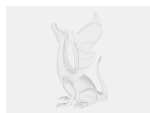
I have to be honest about the fact that I haven’t actually tested it in real snow. I have built it, held it, squished it, pulled on it and it feels sturdy enough, it just isn’t fully verified. I will update this post when that changes.

Edit: It has snowed a bit recently and it works surprisingly well, because of the surface of our driveway it had a tendency to dig in and so I had to limit the angle of the blade with a bit of wire but otherwise worked well, but I think when I have more time I will go for a v2

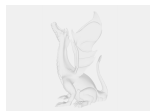
Print instructions

Print the main plow halves standing on the flange, the “manifold” upside down. For the servo guard it sadly requires a bit of support, since it needs to have an indent on the back for the servo arm to freely move.

Model files



snowplow-servo-guard.zip.amf



snowplow-manifold.zip.amf



snowplow-left.zip.amf



snowplow-right.zip.amf



snowplow-servo-guard.stl



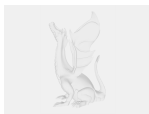
snowplow-manifold.stl



snowplow-left.stl



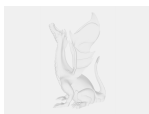
snowplow-right.stl



servo-guard-snowplow-v3.f3d



snowplow-v5.f3d



servo-guard-snowplow-v3.step



snowplow-v5.step

License ©

This work is licensed under a
Creative Commons (4.0 International License)



Attribution

- ✗ | Sharing without ATTRIBUTION
- ✓ | Remix Culture allowed
- ✓ | Commercial Use
- ✓ | Free Cultural Works
- ✓ | Meets Open Definition

