



Bedside box

 **grappeq**

[VIEW IN BROWSER](#)

updated 8. 4. 2023 | published 8. 4. 2023

Summary

A box hanging from the bed frame to store some minor items. Features holes for cables and potential for expansion.

[Household](#) > [Bedroom](#)

Tags: [box](#) [storage](#) [bed](#) [bedside](#) [bedsidebox](#)

A box that you can hang on your bed frame next to your mattress so that you can store some minor items while you sleep. It was designed for a bed with a frame that is 8cm thick.

The box consists of 2 main parts that are meant to be glued together. The box is big enough to hold A4 files or loose papers in it. It also features holes for cables to go in so that you can put your phone or other tech in the box while it's charging.

Alternative sturdier version

There's an alternative version included that allows to attach additional things to the box. It features thicker walls and 2x 10 mm circular holes located 35mm apart (measured between centers of both holes). I used the holes to attach [a bedside lamp that uses IKEA JANSJO USB light](#) to the box using two 10mm printed screws.

Assembly

1. **Print out BedsideBox A + BedsideBox B** (you can use the alternative version if you are interested in mounting something to the box)
2. **Glue them together.** This step is quite tricky as both parts will not be perfectly even and the surface is quite large. The best approach is to use a glue that has some capacity to fill the small gaps between 2 parts. For me a two-part epoxy glue worked reasonably well.
3. **(optional) Print out 2x HolePlug or CableHolePlug** if you want to something to cover the holes or prevent the cables from falling out.

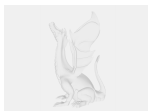
Printing

The model requires quite a bit of filament to print (700-800g) but can safely be printed using the DRAFT settings. Here is the setup I used:

- Nozzle: 0.6mm
- Material: PETG
- Layer height: 0.4mm (DRAFT)
- Infill: 50%

Model files

holeplug.stl



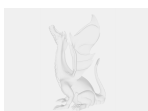
bedside-box-expansion.f3d

cableholeplug.stl

bedsidebox-b.stl

bedsidebox-a.stl

bedsidebox-b-expansion.stl



bedside-box.f3d

License ©

This work is licensed under a
Creative Commons (4.0 International License)



Attribution

- ✗ | Sharing without ATTRIBUTION
- ✓ | Remix Culture allowed
- ✓ | Commercial Use
- ✓ | Free Cultural Works
- ✓ | Meets Open Definition