



Google Pixel 4a Quadlock Case



Phillip9933

[VIEW IN BROWSER](#)

updated 5. 12. 2022 | published 5. 12. 2022

Summary

Phone case for a Google Pixel 4a with Quadlock style connector.

[Gadgets](#) > [Portable Devices](#)

Tags: [case](#) [pixel](#) [phone](#) [google](#) [quadlock](#) [pixel4a](#)

Phone case for a Google Pixel 4a with Quadlock style connector. Quad lock doesn't make a case for my phone so I made one myself. .step file is included if you need to modify anything.

Print instructions

Print Settings

Printer brand:

Prusa

Printer:

i3 MK2.5

Rafts:

No

Supports:

Yes

Resolution:
0.15

Infill:
25%

Filament_brand:
Solutech Flexible

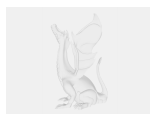
Filament_color:
White

Filament_material:
TPU

Notes:

I used Solutech TPU, with supports. Its flexible but not enough that the lock doesn't work. If you REALLY want to make sure the lock can't move then I suggest printing the first several layers in PETG then switching to TPU.

Model files



pixel4a_quad_caseonly-v2.step



pixel_4a_quadcase_v5.stl

License

This work is licensed under a
[Creative Commons \(4.0 International License\)](#)



Attribution-ShareAlike

-
- ✗ | Sharing without ATTRIBUTION
 - ✓ | Remix Culture allowed

- ✓ | Commercial Use
- ✓ | Free Cultural Works
- ✓ | Meets Open Definition