



Customizable Minnesota Dog Tag

K ShortMort

[VIEW IN BROWSER](#)

updated 8. 4. 2023 | published 8. 4. 2023

Summary

This is a customizable dog tag designed to look like the state of Minnesota



0.90 hrs



1 pcs



0.20 mm



0.40 mm



PLA



6 g



Creality
Ender 3 Pro

[World & Scans](#) > [Animals](#)



Tags: [dogtag](#) [contest](#)

Here is a dog tag shaped to look like the state of Minnesota. This tag includes a “funny” phrase followed by a phone number used for contacting the owner if lost. Both of these texts can be edited by downloading the CAD files and customizing the text boxes. This was designed using Fusion 360.

NOTE:

The CAD is rather small, but this is fully scalable to whatever size you want.

Below is the sizes I used to print mine:

	X	Y	Z	
Position:	<input type="text" value="115.64"/>	<input type="text" value="114.6"/>	<input type="text" value="0"/>	mm 
Rotate:	<input type="text" value="0"/>	<input type="text" value="0"/>	<input type="text" value="0"/>	°
Scale factors:	<input type="text" value="400"/>	<input type="text" value="400"/>	<input type="text" value="240"/>	% 
Size:	<input type="text" value="61.05"/>	<input type="text" value="68.8"/>	<input type="text" value="4.8"/>	mm

Model files



3MF Files

4 files

minnesotadogtag-guesswhereimfrom-extruded-text.3mf

minnesotadogtag-guesswhereimfrom-engraved-text.3mf

minnesotadogtag-vomacka-engraved-text.3mf

minnesotadogtag-vomacka-extruded-text.3mf



STL Files

4 files

minnesotadogtag-guesswhereimfrom-extruded-text.stl

minnesotadogtag-guesswhereimfrom-engraved-text.stl

minnesotadogtag-vomacka-engraved-text.stl

minnesotadogtag-vomacka-extruded-text.stl

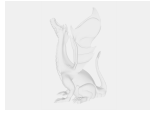


Fusion360 File

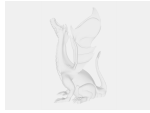
4 files



minnesotadogtag-guesswhereimfrom-extruded-text.f3d



minnesotadogtag-guesswhereimfrom-engraved-text.f3d



minnesotadogtag-vomacka-engraved-text.f3d



minnesotadogtag-vomacka-extruded-text.f3d

Print files

minnesotadogtag-v1.gcode

🌀 PLA 📏 0.40 mm ≡ 0.20 mm ⌚ 0.90 hrs ⚖️ 6 g

☐ This gcode was designed for Glow in the dark PLA so I'd recommend adjusting most temp settings

License ©



This work is licensed under a
[Creative Commons \(4.0 International License\)](#)

Attribution-NonCommercial

- ✗ | Sharing without ATTRIBUTION
- ✓ | Remix Culture allowed
- ✗ | Commercial Use
- ✗ | Free Cultural Works
- ✗ | Meets Open Definition

