



## Maz 537 3D printed model



Adam

[VIEW IN BROWSER](#)

updated 15. 4. 2023 | published 15. 4. 2023

### Summary

Functional doors, suspension, removable flatbed

[Hobby & Makers](#) > [Automotive](#)

Tags: [assembly](#) [car](#) [scale](#) [working](#) [truck](#) [vehicle](#)  
[suspension](#) [scalemodel](#) [offroad](#) [scalemodelkit](#) [carmodel](#)  
[offroadtruck](#) [assemblykit](#)

Maz-537 has functioning suspension, doors and a removable flatbed.








No supports slicer supports, except for wheel mounts and beams. All the other parts that need supports have them built in. All the parts fit smaller build plates like Prusa mini. More info in the assembly instructions.

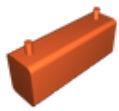
### Print settings

- **Material:** PLA
- **Infill:** I used 5% for all the parts, but its up to you.
- **Perimeters:** 2 should be enough.
- **Layer height:** 0.2 mm
- **Supports:** There are built in supports except wheel mounts and beams, which must be enabled in the slicer or just use my 3mf files.
- **Brim:** I used a brim on the frame parts.

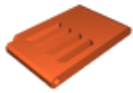
- **Estimated print time:** I use klipper and print quite fast so it took me around 20 hours, but for normal profiles its around 46 hours.
- **Used filament:** 300 grams

## Model files

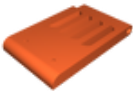
CABIN PARTS (red)		14 files
	cabin.3mf	
	other_parts.3mf	
	cabin.stl	
	wheel_cover_right.stl	
	wheel_cover_left.stl	
	door_left.stl	
	door_right.stl	



**fuel\_tank.stl**



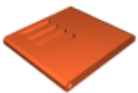
**flap\_door\_back\_left.stl**



**flap\_door\_back\_right.stl**



**flap\_door\_front\_right.stl**



**flap\_door\_front\_left.stl**



**vent.stl**



**handle.stl**

☐ x6



**INTERIOR (black)**

5 files



**interior.3mf**



**single\_seat.stl**

📄 x4



**double\_seat.stl**

📄 x2



**steering\_wheel.stl**



**steering\_column.stl**



**FRAME (black)**

8 files



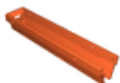
**frame.3mf**



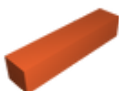
**other\_parts.3mf**



**front\_part.stl**



**back\_part.stl**



**frame\_brace.stl**

📄 x2



**frame\_joining\_clip.stl**

📄 x2



**front\_bumper.stl**



**trailer\_hitch.stl**

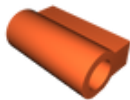


**SUSPENSION (black)**

9 files



**suspension.3mf**



**frame\_connection.stl**

📄 x16



**lower\_arm\_right.stl**

📄 x4



**lower\_arm\_left.stl**

📄 x4



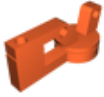
**upper\_arm.stl**

📄 x8



**wheel-mount.stl**

 x4



**wheel\_mount\_back.stl**

 x4



**suspension\_limiter.stl**

 x4



**beam.stl**

 x2



**WHEELS (body color and black)**

4 files



**tires.3mf**

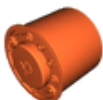


**rims.3mf**



**tire.stl**

 x8



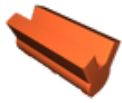
**rim.stl**

 x8

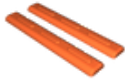


## ENGINE (Black and red)

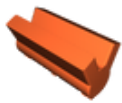
5 files



**block.3mf**



**covers.3mf**



**block.stl**



**cover\_right.stl**



**cover\_left.stl**



## FLATBED (wood and black)

7 files



**flatbed\_base.3mf**



**wooden\_floor.3mf**



**other\_parts.3mf**



**flatbed\_base.stl**



**wooden\_floor.stl**



**holder.stl**

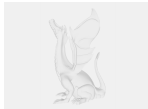
☐ x4



**pin.stl**

☐ x4

## Other files



**instructions.pdf**

## License

This work is licensed under a  
**Creative Commons (4.0 International License)**



**Attribution-NonCommercial**

- ✗ | Sharing without ATTRIBUTION
- ✓ | Remix Culture allowed
- ✗ | Commercial Use
- ✗ | Free Cultural Works
- ✗ | Meets Open Definition



