

BL-Touch mount for Wanhao Duplicator i3 Plus



Rob

[VIEW IN BROWSER](#)

updated 24. 4. 2023 | published 24. 4. 2023

Summary

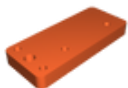
A simple mount.

[3D Printers](#) > [3D Printers - Upgrades](#)

Tags: [wanhaoduplicatori3](#) [bltouch](#)

Rotate to print flat side down. I used 20% infill, no need for more. Very quick and small print. The screws that come with the BL-Touch will cut their own thread, you may need slightly longer screws for your extruder fan as it mounts to that fitting.

Model files



[duplicator-bl-touch-mount.stl](#)

License

This work is licensed under a
Creative Commons (4.0 International License)



Attribution-NonCommercial

- ✗ | Sharing without ATTRIBUTION
- ✓ | Remix Culture allowed
- ✗ | Commercial Use
- ✗ | Free Cultural Works
- ✗ | Meets Open Definition