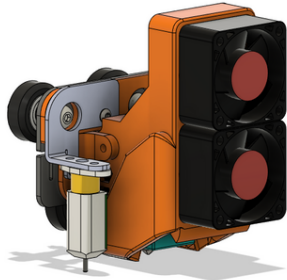


3D MODEL ONLY



Diplo Duct for Ender 5 Pro & Ender 5 Plus BOWDEN

 **mankokimochi**

[VIEW IN BROWSER](#)

updated 24. 4. 2023 | published 24. 4. 2023

Summary

A Remixed version of the Ender 3 V2 Diplo Duct to fit an Ender 5 pro/plus. Specifically made for BOWDEN SETUP

[3D Printers](#) > [3D Printers - Upgrades](#)

Tags: [mod](#) [hotend](#) [ender](#) [microswiss](#)

A Remixed version of the Ender 3 V2 Diplo Duct to fit an Ender 5 pro/plus.
Specifically made for BOWDEN SETUP.

Modified version to fit Micro Swiss All Metal hotend, Larger space between the heat block so you can print this using PLA.

This version needed heat inserts for the fan mounting, and the side bracket. Model separated into 2 pieces, the plate adapter, and the fan duct itself. Heat insert only required on the fan duct {4 on each fan, 1 left side, 1 right side}.

Not gonna make Direct drive version because my Ender-5 Plus **specifically** set to print large PLA stuff. F3Z and STEP file available to edit

This remix is based on



Diplo Duct - Ender 3 V2 4020 BMG Direct Drive

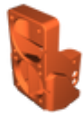
by GalvanicGlaze

Model files



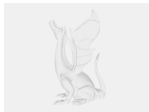
e5-diplo-plate.3mf

□ Plate Adapter



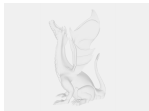
e5-diplo-duct-2.3mf

□ Fan Duct



e5-diplo-v6.f3z

□ Fusion360 file



e5-diplo-v7.step

License ©

This work is licensed under a
[Creative Commons \(4.0 International License\)](#)



Attribution—Noncommercial—Share Alike

- ✗ | Sharing without ATTRIBUTION
- ✓ | Remix Culture allowed
- ✗ | Commercial Use
- ✗ | Free Cultural Works
- ✗ | Meets Open Definition

