

3D MODEL ONLY



OpenBuilds Makerlinks



OpenBuilds

[VIEW IN BROWSER](#)

updated 24. 4. 2023 | published 24. 4. 2023

Summary

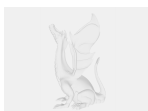
Tee Nut Makerlink family is the quickest way to assemble your Build giving you ample flexibility on the design yet maint

[3D Printers](#) > [3D Printers - Upgrades](#)

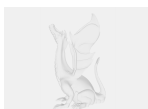
Tags: [tnut](#) [vslot](#) [cbeam](#) [makerlink](#)

With several options to choose from, the OpenBuilds Tee Nut Makerlink family is the quickest way to assemble your Build giving you ample flexibility on the design yet maintaining a strong connection between Linear Rails.

Model files



openbuilds-4-way-tee-nut.step



openbuilds-90-hidden-tee-nut.step



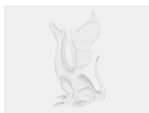
openbuilds-135-angle-tee-nut.step



openbuilds-2-way-tee-nut.step



openbuilds-quad-tee-nut.step



openbuilds-3-way-tee-nut.step



openbuilds-60-angle-tee-nut.step



openbuilds-90-angle-tee-nut.step

License

This work is licensed under a
Creative Commons (4.0 International License)



Attribution-ShareAlike

- ✗ | Sharing without ATTRIBUTION
- ✓ | Remix Culture allowed
- ✓ | Commercial Use
- ✓ | Free Cultural Works
- ✓ | Meets Open Definition