

## OpenBuilds Cast Corner Bracket



OpenBuilds

[VIEW IN BROWSER](#)

updated 24. 4. 2023 | published 24. 4. 2023

### Summary

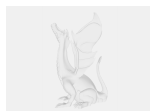
OpenBuilds Cast Corner Brackets are used to connect two V-Slot Linear Rails together for a 90 degree connection.

[3D Printers](#) > [3D Printers - Upgrades](#)

Tags: [bracket](#) [cornerbracket](#) [vslot](#) [cbeam](#)

OpenBuilds Cast Corner Brackets are used to connect two V-Slot Linear Rails together for a 90 degree connection.

### Model files



[openbuilds-cast-corner-bracket.step](#)

# License

This work is licensed under a  
**Creative Commons (4.0 International License)**



**Attribution-ShareAlike**

- 
- ✗ | Sharing without ATTRIBUTION
  - ✓ | Remix Culture allowed
  - ✓ | Commercial Use
  - ✓ | Free Cultural Works
  - ✓ | Meets Open Definition