

Simple Magnetic Gearbox



Ben Berres

[VIEW IN BROWSER](#)

updated 27. 2. 2024 | published 27. 2. 2024

Summary

A small magnetic gearbox for use with 1/2 inch hex bearings and shafts

[Hobby & Makers](#) > [Mechanical Parts](#)

This simple magnetic gearbox that I made as a small project uses 32 10mm x3mm x 20mm rectangular magnets, 4 1/2 inch hex bearings with a 1.125 inch OD, and 16 1/4-20 bolts with a 3/8 hex head.

Note: The supporting arms that hold the gearbox need to be sliced from the stls and glued on after/during assembly.

Another Note: The attached Solidworks files are defined by the equations text document that is also attached

Model files



Solid Works and Main Assembly Files

7 files



bolt.sldprt



bearing.sldprt



sun-gear.sldprt



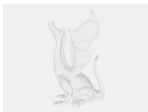
flux-moderator.sldprt



simple-magnetic-gearbox.sldasm



moon-gear.sldprt



magnet.sldprt



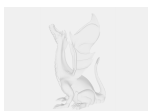
sun-gear.stl



flux-moderator.stl



moon-gear.stl



magnetic-gearbox-assembly.step

Other files



equations.txt

License

This work is licensed under a
Creative Commons (4.0 International License)



Attribution

-
- ✗ | Sharing without ATTRIBUTION
 - ✓ | Remix Culture allowed
 - ✓ | Commercial Use
 - ✓ | Free Cultural Works
 - ✓ | Meets Open Definition