



## 30cc / 55cc tube dispenser

 **Digitehas**

[VIEW IN BROWSER](#)

updated 4. 6. 2023 | published 4. 6. 2023

### Summary

Manually operated precision 3 part dispenser for 30cc and 55cc tubes/ barrels.

[Hobby & Makers](#) > [Tools](#)

Tags: [glue](#) [dispenser](#) [30cc](#) [loctite](#) [buttress](#) [syringe](#)  
[syringeextruder](#) [flux](#) [manual](#) [fisnar](#) [barrel](#) [nordson](#)  
[applicator](#) [55cc](#) [efd](#) [thingiverse](#)

Manually operated precision 3 part dispenser for 30cc and 55cc tubes/ barrels. Does't require supports to print.

Recommended layer height 0.2mm or below. 3-5mm of brim recommended.

Takes around 4h15m to print with previously mentioned settings.

Note when placing thumbscrew.stl on bed and assembling the unit because the design features buttress thread. Position flat side of the buttress thread facing away from the attached tube.

Tube twists and locks into place, so no need to undo the whole screw.

Link to the 30 / 55cc tube stand- <https://www.thingiverse.com/thing:4797599> <https://www.prusaprinters.org/prints/60714-30cc-55cc-tube-stand>

Feel free to modify, share or sell in any format.

Inspired by user Perinski "Solder paste and flux Dispenser"- <https://www.thingiverse.com/thing:3148234>

## Print Settings

### Printer Brand:

Prusa

### Printer:

I3 MK3S

### Rafts:

Doesn't Matter

### Supports:

Doesn't Matter

### Resolution:

200

### Infill:

15

**Filament:** [Prusament PET-G](#) Jet Black

### Notes:

PETG, PLA, ABS/ASA all suitable. Brim recommended.

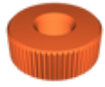
Category: Hand Tools

## Model files



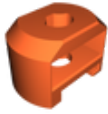
screw\_30cc.stl

---



**thumbscrew.stl**

---



**body.stl**

---



**screw\_50cc.stl**

[Find source .stl files on Thingiverse.com](#)

## License

This work is licensed under a  
[Creative Commons \(4.0 International License\)](#)



### **Attribution**

---

- ✗ | Sharing without ATTRIBUTION
- ✓ | Remix Culture allowed
- ✓ | Commercial Use
- ✓ | Free Cultural Works
- ✓ | Meets Open Definition