

## Tile Grout Joint Scraper

 Joel M

[VIEW IN BROWSER](#)

updated 24. 4. 2023 | published 24. 4. 2023

### Summary

This is a tile scraper to pull out thin-set to make room for grout compound.

[Hobby & Makers](#) > [Tools](#)

Tags: [tile](#) [scraper](#) [set](#) [thin](#) [tiling](#) [grout](#) [thinset](#)

This is a tile spacer scraper to remove thin-set when installing tile. This removes thin-set before it's dry to keep room for grout compound.

### Model files



#### grout-joint-scraper-3-16.stl

☐ 3/16" blade scraper width



#### grout-joint-scraper-1-8.stl

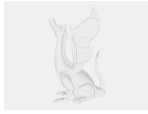
☐ 1/8" blade scraper width



### grout-joint-scraper-3-16.step

📄 3/16" blade scraper width

---



### grout-joint-scraper-1-8.step

📄 1/8" blade scraper width

---



### grout-joint-scraper.sldprt

📄 SolidWorks CAD model

## License ©

This work is licensed under a  
**Creative Commons (4.0 International License)**



### Attribution

---

- ✗ | Sharing without ATTRIBUTION
- ✓ | Remix Culture allowed
- ✓ | Commercial Use
- ✓ | Free Cultural Works
- ✓ | Meets Open Definition