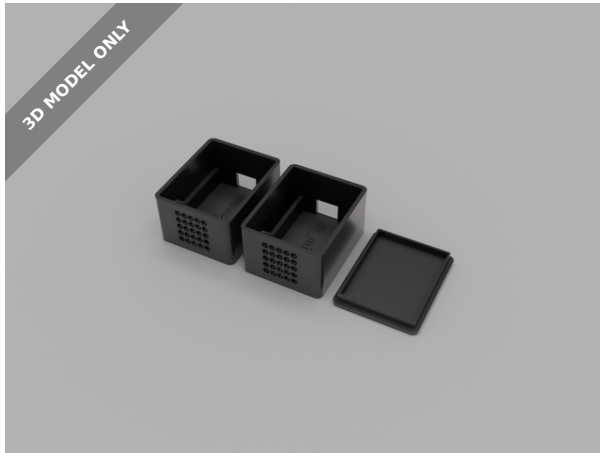


3D MODEL ONLY



LD2410C Case d1_mini/ esp32_d1_mini



Danuvius

[VIEW IN BROWSER](#)

updated 8. 3. 2024 | published 8. 3. 2024

Summary

I needed a Case for the LD2410C which fits a d1 mini or esp32 d1 mini, so i designed this one.

[Hobby & Makers](#) > [Electronics](#)

Tags: [esp32](#) [d1mini](#) [radar](#) [radardetector](#) [esp32d1mini](#)
[mmwave](#) [ld2410](#) [ld2410c](#)

Model files



ld2410c_case.3mf

ld2410c_case-v3.f3d

License

This work is licensed under a
Creative Commons (4.0 International License)



Attribution—Noncommercial—Share Alike

- ✗ | Sharing without ATTRIBUTION
- ✓ | Remix Culture allowed
- ✗ | Commercial Use
- ✗ | Free Cultural Works
- ✗ | Meets Open Definition