



Pictionary Air Holder

 **galexioza**

[VIEW IN BROWSER](#)

updated 24. 4. 2023 | published 24. 4. 2023

Summary

This is a holder for Pictionary Air, including both the cards and light wand.

[Toys & Games](#) > [Outdoor Toys](#)

Tags: [holder](#) [thingiverse](#) [pictionary](#)

This is a holder for Pictionary Air, including both the cards and light wand.

The card deck has a draw side and a discard side, as well as a slot to hold the current card.

The lid also acts as a phone holder that keeps the phone at a good angle for playing the game, and somewhere to store the light wand in between turns.

Everything packs away into a fairly low-footprint so you can keep it next to the TV or on a bookshelf.

I used quite a high infill to give it a bit of weight, otherwise the light wand can topple the whole thing.

Print Settings

Printer Brand:

Prusa

Printer:

Prusa Mk1

Rafts:

No

Supports:

No

Infill:

30%

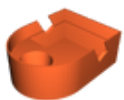
Filament:

Kiwi3D PLA Silk

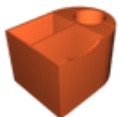
Copper

Category: Toy & Game Accessories

Model files



dictionary_air_holder_lid.stl



dictionary_air_holder_base.stl

[Find source .stl files on Thingiverse.com](#)

License ©

This work is licensed under a
[Creative Commons \(4.0 International License\)](#)



Attribution

- ✗ | Sharing without ATTRIBUTION
- ✓ | Remix Culture allowed
- ✓ | Commercial Use
- ✓ | Free Cultural Works
- ✓ | Meets Open Definition