



Magnetic Easydens Caddy



DavidGray

[VIEW IN BROWSER](#)

updated 25. 4. 2023 | published 25. 4. 2023

Summary

A magnetic caddy for the Easydens

[Household](#) > [Kitchen](#)

Tags: [homebrewing](#) [brewing](#) [homebrew](#) [cadquery](#) [brewery](#)

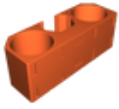
Requires 10 20x6x2 magnets (same as used on the MK3 print bed)

3 versions included.

A flat back version with and without magnets and a notched version to fit https://www.bunnings.com.au/pinnacle-600-x-600-x-250mm-matte-black-wall-mounted-cabinet_p0038057

the default hole size for cups is 65mm. Parametric Cadquery source is included if you want to suit another size.

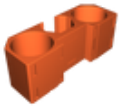
Model files



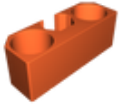
easydens_holder_flat.stl



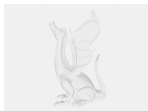
easydens_holder_flat.step



easydens_holder_notched.stl



easydens_holder_flat_no_magnets.stl



easydens_holder_notched.step



easydens_holder_flat_no_magnets.step



easydens.py

License ©

This work is licensed under a
[Creative Commons \(4.0 International License\)](https://creativecommons.org/licenses/by/4.0/)



Attribution

- ✗ | Sharing without ATTRIBUTION
- ✓ | Remix Culture allowed

- ✓ | Commercial Use
- ✓ | Free Cultural Works
- ✓ | Meets Open Definition